



深圳贯虹自动化有限公司
Shenzhen Guan hong Automation CO.,LTD.

Shenzhen Guan hong Automation CO.,LTD.

Add:Room 503 Anxin Building, No 536 Shenhui Road, Liuyue community, Henggang Street ,Longgang District, Shenzhen City,Guangdong Province, China (518115)

Tel: +86 755 61883813

Fax:+86 755 26099399

Mobile: +86 137 2860 1949

Email: sales01@szghauto.com

sales01@cncmachine-controller.com

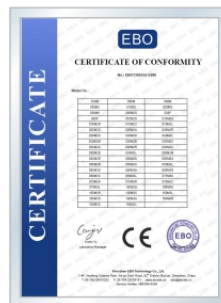


<http://www.szghauto.com>
PRODUCT SELECTION GUIDE

Shenzhen Guan hong Automation CO.,LTD (Formerly known as 'Shenzhen Guan hong Automation Technology Co.,Limited(Built in 19 November 2010)') is one of the leading CNC & automatic company in China, specialized in designing projects, marketing, and oversea trading, having extensive experience in CNC package solution, Our focus has been on providing the high quality of Lathe CNC system, Milling CNC system, Engraving CNC system, AC Spindle servo motor&driver, AC servo motor & driver, Stepper motor & driver, Closed stepper motor &driver, Gear reducer.



COMPANY PROFILE



SZGH' products have been in working with a wide variety of CNC machinery and automatic processing equipment with high performance and good precision, stably. We have now established a reliable structure , our experienced engineers and technicians are able to provide professional consultancy and offer you most suitable CNC application solution.

Our strict quality control measures guarantee excellent reliability and high standard of quality. Utilizing advanced CNC machinery to test every product, 100 percent inspection is made before packaging and shipment. Moreover, We also offer flexible lead times to support your business.

We have a large number of customers across Asia, America, the Middle East, Europe, South America, and Africa. Specially we already built own business corporate group in Middle East market.



GUAN-HONG ADVANTAGE

- Certified actual products - We have a zero-tolerance policy for asset recovery vendors.
- Lowest package prices -Always offer lower price than other companies.
- Professional technical engineer team- possible fastest response and support to client' application demand.
- Quality guarantee – Free, one-years warranty and life-long maintenance. Any quality problem, GuanHong promise to refund.
- Fast, professional and reliable International delivery – flexible and low cost delivery solution for clients.



CNC Lathe & Turning Controller

- 1) 2-4 Axis economic type series CNC lathe controller
- 2) 800x600 8.4 inch real color LCD displayer
- 3) Electric Turret & Binary code turret, Max: 99 pcs tools
- 4) Support ATC , Macro function and PLC function
- 5) 500KHz Pulse Output Frequency, Max speed is 30m/min, feeding speed is 15m/min
- 6) Adapted servo spindle can realize spindle continuous position, rigid tapping, rigid screw processing
- 7) High anti-jamming switch power(220VAC -> 24VDC&5V)
- 8) 64MB Memory , 32Mb user store room
- 9) With USB interface, it supports file operation in flash disk, system configuration and software upgrade
- 10) Analog voltage output of 0~10V in two channels, support double spindles
- 11) 32 bits high performance, low power consumption industrial grade ARM microprocessor.
- 12) Basic I/O: 40X24, can be edited freely
- 13) cutter offset : C
- 14) English menu, program and interface, full screen edition

Application: CNC Lathe & Turning Machinery and specially automatic equipment



SZGH-CNC990TDb



SZGH-CNC990TDc

CNC Lathe & Turning Controller

- 1) 2-5 Axis standard and updated series CNC lathe controller
- 2) CNC1000TDc series support absolute type servo system & linear scale
- 3) Electric Turret & Binary code turret, Max: 99 pcs tools
- 4) Support ATC , Macro function and PLC function
- 5) 5MHz Pulse Output Frequency, Max speed is 300m/min, feeding speed is 150m/min
- 6) Adapted servo spindle can realize spindle continuous position, rigid tapping, rigid screw processing
- 7) High anti-jamming switch power(220VAC -> 24VDC&5V)
- 8) 128MB Memory, 110Mb user store room
- 9) With USB interface, it supports file operation in flash disk, system configuration and software upgrade
- 10) Analog voltage output of 0~10V in two channels, support double spindles
- 11) 32 bits high performance, low power consumption industrial grade ARM microprocessor
- 12) Basic I/O: 56X32, user can be edited freely
- 13) cutter offset: C
- 14) English menu, program and interface, full screen edition

Application: CNC Lathe Machinery, CNC Turning Center, Grinding Machine and specially automatic equipment



SZGH-CNC1000TDb



SZGH-CNC1000TDc

Vertical Type CNC Lathe & Turning Controller

- 1) 3-5 Axis vertical type series CNC lathe controller
- 2) CNC1500Tdc series support absolute type servo system & linear scale
- 3) Electric Turret & Binary code turret,Max: 99 pcs tools
- 4) Support ATC , Macro function and PLC function
- 5) 5MHz Pulse Output Frequency,Max speed is 300m/min, feeding speed is 150m/min
- 6) Adapted servo spindle can realize spindle continuous position,rigid tapping,rigid screw processing
- 7) High anti-jamming switch power(220VAC -> 24VDC&5V)
- 8) 128MB Memory , 110Mb user store room
- 9) With USB interface,it supports file operation in flash disk,system configuration and software upgrade
- 10) Analog voltage output of 0~10V in two channels,support double spindles
- 11) 32 bits high performance, low power consumption industrial grade ARM microprocessor
- 12) Basic I/O : 56X32 , user can be edited freely
- 13) cutter offset : C
- 14) English menu, program and interface, full screen edition



SZGH-CNC1500TDb/
SZGH-CNC1500Tdc

Application: CNC Lathe Machinery,CNC Turning Center,Grinding Machine and specially automatic equipment

Double Channel Type CNC Lathe & milling Controller

- 1) 2-8 Axis double channels series CNC lathe & milling controller
- 2) able to use to two pcs lathe machine,or milling machine at same time
(Example: A channel working 5 axis lathe,B channel working with 3 axis milling machine)
- 3) Electric Turret & Binary code turret,Max:99 pcs tools
- 4) Support ATC , Macro function and PLC function
- 5) 5MHz Pulse Output Frequency,Max speed is 300m/min, feeding speed is 150m/min
- 6) Adapted servo spindle can realize spindle continuous position,rigid tapping,rigid screw processing
- 7) High anti-jamming switch power(220VAC -> 24VDC&5V)
- 8) 128MB Memory,110Mb user store room
- 9) With USB interface,it supports file operation in flash disk,system configuration and software upgrade
- 10) Analog voltage output of 0~10V in two channels,support double spindles
- 11) 32 bits high performance, low power consumption industrial grade ARM microprocessor
- 12) Basic I/O: 56X32,user can be edited freely
- 13) cutter offset:C
- 14) English menu, program and interface, full screen edition



SZGH-CNC2000MTDb

Application: CNC Lathe Machinery,CNC Turning Center,CNC Milling Machine, CNC Milling & lathe together equipment and Special CNC Machinery

CNC Milling & Drilling Controller

- 1) 3-4Axis economic type series CNC milling &Drilling controller
- 2) 800x600 8.4 inch real color LCD displayer
- 3) CNC990MDc series support absolute type servo system & linear scale
- 4) Support PLC and Macro function
- 5) 500KHz Pulse Output Frequency,Max speed is 30m/min, feeding speed is 15m/min
- 6) Adapted servo spindle can realize spindle continuous position,rigid tapping,rigid screw processing
- 7) High anti-jamming switch power(220VAC -> 24VDC&5V)
- 8) 128MB Memory,110Mb user store room
- 9) With USB interface,it supports file operation in flash disk,system configuration and software upgrade
- 10) Analog voltage output of 0~10V in two channels,support double spindles
- 11) 32 bits high performance, low power consumption industrial grade ARM microprocessor
- 12) Basic I/O:40X24,can be edited freely
- 13) cutter offset:C
- 14) English menu,program and interface, full screen edition

Application: CNC Milling Machinery,CNC Drilling machinery,CNC Boring Machinery & automatic equipment



SZGH-CNC990MDb



CNC Milling & Router Controller

- 1) 3-5 Axis standard and updated series CNC milling and router controller
- 2) CNC1000MDc series support absolute type servo system & linear scale
- 3) 800x600 8.4 inch real color LCD displayer
- 4) Support PLC and macro function
- 5) 5MHz Pulse Output Frequency,Max speed is 300m/min, feeding speed is 150m/min
- 6) Adapted servo spindle can realize spindle continuous position,rigid tapping,rigid screw processing
- 7) High anti-jamming switch power(220VAC -> 24VDC&5V)
- 8) 128MB Memory,110Mb user store room
- 9) With USB interface,it supports file operation in flash disk,system configuration and software upgrade
- 10) Analog voltage output of 0~10V in two channels,support double spindles
- 11) 32 bits high performance,low power consumption industrial grade ARM microprocessor
- 12) Basic I/O:56X32,user can be edited freely
- 13) cutter offset:C
- 14) English menu,program and interface, full screen edition

Application:CNC Boring machine,CNC wood working machine,CNC Milling machinery, CNC drilling machinery,and specially automatic equipment



SZGH-CNC1000MDb



SZGH-CNC1000MDc



Vertical Type CNC milling & Router Controller

- 1) 2-5 Axis vertical type series CNC Milling & Router controller
- 2) CNC1500MDc series support absolute type servo system & linear scale
- 3) 800x600 8.4 inch real color LCD displayer
- 4) Support PLC and macro function
- 5) 5MHz Pulse Output Frequency,Max speed is 300m/min, feeding speed is 150m/min
- 6) Adapted servo spindle can realize spindle continuous position,rigid tapping,rigid screw processing
- 7) High anti-jamming switch power(220VAC -> 24VDC&5V)
- 8) 128MB Memory,110Mb user store room
- 9) With USB interface,it supports file operation in flash disk,system configuration and software upgrade
- 10) Analog voltage output of 0~10V in two channels,support double spindles
- 11) 32 bits high performance, low power consumption industrial grade ARM microprocessor
- 12) Basic I/O:56X32,user can be edited freely
- 13) cutter offset:C
- 14) English menu, program and interface,full screen edition

Application: CNC wooding progressing equipment,CNC milling machinery,CNC drilling machinery,CNC router machine,and CNC engraving machine



**SZGH-CNC1500MDb/
SZGH-CNC1500MDc**

CNC Milling Machining Center Controller

- 1) 3-5 Axis high classes series CNC Controller for Machine Center
- 2) Support absolute type servo system & linear scale
- 3) 800x600 8.4 inch real color LCD displayer
- 4) Support ATC , Macro function and PLC function
- 5) Type of Tool Magazine: Arm type,Servo type, Disc type, Umbrella Type & Other Special Type,Max:99 Tools
- 6) 5MHz Pulse Output Frequency,Max speed is 300m/min, feeding speed is 150m/min
- 7) Adapted servo spindle can realize spindle continuous position,rigid tapping,rigid screw processing
- 8) 64MB Memory,32Mb user store room
- 9) With USB interface,it supports file operation in flash disk,system configuration and software upgrade
- 10) Analog voltage output of 0~10V in two channels,support double spindles
- 11) 32 bits high performance,low power consumption industrial grade ARM microprocessor
- 12) Basic I/O:56X32,user can be edited freely
- 13) cutter offset:C
- 14) English menu,program and interface,full screen edition

Application: Vertical Machine Center,Horizontal Machine Center and Other special automatic equipment



SZGH-CNC1000MDcb

Cnc Grinding Controller

- 1) 2-5 Axis standard series CNC Grinder controller
- 2) Support absolute type servo system & linear scale
- 3) 800x600 8.4 inch real color LCD displayer
- 4) 5MHz Pulse Output Frequency,Max speed is 300m/min, feeding speed is 150m/min
- 5) Adapted servo spindle can realize spindle continuous position,rigid tapping,rigid screw processing
- 6) High anti-jamming switch power(220VAC -> 24VDC&5V)
- 7) 128MB Memory,110Mb user store room
- 8) With USB interface,it supports file operation in flash disk,system configuration and software upgrade
- 9) Analog voltage output of 0~10V in two channels,support double spindles
- 10) 32 bits high performance, low power consumption industrial grade ARM microprocessor
- 11) Basic I/O:56X32,user can be edited freely
- 12) cutter offset:C
- 13) English menu,program and interface,full screen edition

Application: CNC grinding machinery,CNC flat grinder,and specially automatic equipment



**SZGH-CNC1000GDb/
SZGH-CNC1000GDC**

CNC Boring Controller

- 1) 3-5 Axis standard series & Updated series CNC boring controller
- 2) CNC1000MDc series support absolute type servo system & linear scale
- 3) 800x600 8.4 inch real color LCD displayer
- 4) Support PLC and macro function, ARM core, and DSP , FPGA
- 5) 5MHz Pulse Output Frequency,Max speed is 300m/min, feeding speed is 150m/min
- 6) Adapted servo spindle can realize spindle continuous position,rigid tapping,rigid screw processing
- 7) High anti-jamming switch power(220VAC -> 24VDC&5V)
- 8) 128MB Memory,110Mb user store room
- 9) With USB interface,it supports file operation in flash disk,system configuration and software upgrade
- 10) Analog voltage output of 0~10V in two channels,support double spindles
- 11) 32 bits high performance, low power consumption industrial grade ARM microprocessor
- 12) Basic I/O:56X32,user can be edited freely
- 13) cutter offset:C
- 14) English menu,program and interface,full screen edition

Application: CNC Boring machine and specially automatic equipment



SZGH-CNC1000MDb



SZGH-CNC1000MDc

PLANETARY PRECISION GEAR BOXES

<http://www.szghauto.com>



Specification for Gear Reducer

Model	PL60	PL80	PL90	PL120	PL150	PL160	PL180
Continuous output torque (Kgf*m/Nm)	3.4/34	8.5/84	8.5/84	23.4/230	53/520	53/520	114/1120
Max.torque ofl oad (Kgf*m/Nm)	2.5 times torque						
Radius load on output shaft (kgf)	51	96	298	615	863	863	1331
Gear educer inertia(Kg*cm ²)	0.306	0.73	5.73	1.09	3.09	3.09	9.3
Range of output shaft of servomotor diameter	within 14	within 19	within 19	within 24	within 42	within 42	within 55
L1 weight (kg)	1.6	3.3	2.8	5	16.4	15.2	37
L2 weight (kg)	2.1	4.3	3.4	7.2	17.6	16.2	46.4
L3 weight (kg)	2.6	5.3	4	8.2	18.9	18.5	
Lead weight	0.12	0.65	0.65	1	1.5	1.5	2.9

Ratio Table of Gear Reducer

Model	L1	L2	L3
PL60	3,4,5	9,12,15,20,25	27,36,45,48,60,75,100,125
PL80/90/120	3,4,5,7	9,12,15,20,21,25,28,35,49	45,48,60,75,80,100,125,140,175,245,343
PL150/160	3,5,7,10	9,12,15,20,,25,28,30,40,50,70	60,75,80,100,150,200,300,400,500,700,1000
PL180	3,5,7,10	9,15,21,25,30,35,49,50,70,100	

SERVO MOTOR & DRIVER

<http://www.szghauto.com>



Model	Frame size (mm)	Rated Power (w)	Torque(N.M)		Rated Speed (r/min)	Rated Current (A)	Rated Voltage (V)	Rotor Inertia (kg.m ² x10 ⁻⁴)	Encoder Resolution (PPR)		Motor Length (mm)	brake motor (T) Length	Diameter of Axle (mm)	Weight (kg)
			Continuous	peak					Increment type	Absolute type				
SZGH-04005D	40	50	0.16	0.32	3000	0.4	220	0.025	2500	17 bit	75	109	8	0.4
SZGH-04010D	40	100	0.32	0.64	3000	0.6	220	0.051	2500	17 bit	90	124	8	0.5
SZGH-06020DC	60	200	0.64	1.9	3000	1.2	220	0.175	2500	17 bit	116	164	14	1.16
SZGH-06040DC	60	400	1.27	3.9	3000	2.8	220	0.29	2500	17 bit	141	189	14	1.6
SZGH-06060DC	60	600	1.9	5.73	3000	3.5	220	0.39	2500	17 bit	169	217	14	2.07
SZGH-08075DC	80	750	2.4	7.1	3000	3	220	1.82	2500	17 bit	151	191	19	2.9
SZGH-08075BC	80	750	3.5	10.5	2000	3	220	2.63	2500	17 bit	179	219	19	3.9
SZGH-09075DC	86	750	2.4	7.1	3000	3	220	2.45	2500	17 bit	150	198	16	3.1
SZGH-09075BC	86	750	3.5	10.5	2000	3	220	3.4	2500	17 bit	172	220	16	3.9
SZGH-09100CC	86	1000	4	12	2500	4	220	3.7	2500	17 bit	182	230	16	4.2
SZGH-11060DC	110	600	2	6	3000	2.5	220	3.1	2500	17 bit	159	233	19	4.5
SZGH-11080BC	110	800	4	12	2000	3.5	220	5.4	2500	17 bit	189	263	19	6
SZGH-11120DC	110	1200	4	12	3000	5	220	5.4	2500	17 bit	189	263	19	6
SZGH-11120BC	110	1200	6	12	2000	5	220	7.6	2500	17 bit	219	293	19	7.9
SZGH-11180DC	110	1800	6	18	3000	6	220	7.6	2500	17 bit	219	293	19	7.9
SZGH-13100CC	130	1000	4	12	2500	4	220	8.5	2500	17 bit	166	223	22	6.2
SZGH-13130CC	130	1300	5	15	2500	5	220	10.6	2500	17 bit	171	228	22	6.6
SZGH-13150CC	130	1500	6	18	2500	6	220	12.6	2500	17 bit	179	236	22	7.4
SZGH-13150AC	130	1500	10	25	1500	6	220	19.4	2500	17 bit	213	294	22	11.5
SZGH-13200CC	130	2000	7.7	22	2500	7.5	220	15.3	2500	17 bit	192	249	22	10
SZGH-13230AC	130	2300	15	30	1500	9.5	220	27.7	2500	17 bit	241	322	22	14.4
SZGH-13260CC	130	2600	10	25	2500	10	220	19.4	2500	17 bit	209	290	22	11.5
SZGH-13380CC	130	3800	15	45	2500	13.5	220	27.7	2500	17 bit	231	312	22	14.7
					10	380								
SZGH-15360AC	150	3600	18	36	2000	17	220	46	2500	17 bit	248	321	28	17
					9.5	380								
SZGH-18270CC	180	2700	17.2	43	1500	10.5	220	34	2500	17 bit	226	298	35	20
					6.5	380								
SZGH-18300CC	180	3000	19	47	1500	12	220	38	2500	17 bit	232	304	35	21
					7.5	380								
SZGH-18450CC	180	4500	21.5	53	2000	16	220	47	2500	17 bit	243	315	35	22
					9.5	380								
SZGH-18290BC	180	2900	27	67	1000	12	220	61	2500	17 bit	262	334	35	26
					7.5	380								
SZGH-18370BC	180	3700	35	70	1000	16	220	86	2500	17 bit	292	364	35	31
					10	380								
SZGH-18430AC	180	4300	27	67	1500	16	220	61	2500	17 bit	262	334	35	26
					10	380								
SZGH-18550CC	180	5500	35	70	1500	24	220	86	2500	17 bit	292	364	35	30.5
					12	380								
SZGH-18750CC	180	7500	48	96	1500	20	380	95	2500	17 bit	346	418	35	40

SERVO DRIVER SERIES

<http://www.szghauto.com>



Driver Model	Control Mode			Rated Voltage (A)	Current (A)	Encoder Type	Matched Motor
	Torque	Position	Velocity				
GH-SD2004	✓	✓	✓	Single or 3phase 220VAC	20	Increment	50-600W
GH-SD2010	✓	✓	✓	Single or 3phase 220VAC	30	Increment	750W-1.0KW
GH-SD2026	✓	✓	✓	Single or 3phase 220VAC	30	Increment	1.0KW -2.3KW
SZGH-302 (Dual channel)	-	✓	-	Single or 3phase 220VAC	30	Increment	750W-2.3KW
SZGH-501	✓	✓	✓	Single or 3phase 220VAC	50	Increment	2.3KW-3.8KW
SZGH-751	✓	✓	✓	Single or 3phase 220VAC	75	Increment	3.8KW-5.5KW
SZGH-503	✓	✓	✓	3phaes 380VAC	50	Increment	3.8KW-5.5KW
SZGH-753	✓	✓	✓	3phase 380VAC	75	Increment	7.5KW-11KW
SZGH-201H	✓	✓	✓	Single or 3phase 220VAC	30	Absolute	50-1.0KW
SZGH-301H	✓	✓	✓	Single or 3phase 220VAC	30	Absolute	200W-2.3KW
SZGH-302H (Dual channel)	-	✓	-	Single or 3phase 220VAC	30	Absolute	750W-2.3KW
SZGH-501H	✓	✓	✓	Single or 3phase 220VAC	50	Absolute	2.3KW-3.8KW
SZGH-503H	✓	✓	✓	3phase 380VAC	50	Absolute	3.8KW-5.5KW
SZGH-751H	✓	✓	✓	Single or 3phase 220VAC	75	Absolute	3.8KW-5.5KW
SZGH-753H	✓	✓	✓	3phase 380VAC	75	Absolute	7.5KW-11KW

Spindle motor



spindle motor list

(Note: The specifications in the table refer to the motor diameter and housing length.)

Model	power (kw)	Voltage (v)	Specification (mm)	Rotation speed (rpm)	frequency (HZ)	Cutter head	Number of bearings	Weight
JY48-300-60k	0.3kw	75v	φ48×130	60000	1000	ER8	2	
JY62-0.8-24K	0.8kw	220v	φ65×160	24000	400	ER11	2	
JY62-0.8-24K	0.8kw	220v	φ65×210	24000	400	ER11	4	
JY65-0.8-24K	0.8kw	220v	φ65×195	24000	400	ER11	4	
JY80-1.5L-24K	1.5kw	220v	φ80×200	24000	400	ER11	4	
JY80-1.5C-24k	1.5kw	220v	φ80×195	24000	400	ER16	4	
JY80-1.5CB-2K	1.5kw	380v	φ80×195	24000	400	ER16	4	
JY80-1.5LC-24K	1.5kw	220v	φ80×215	24000	400	ER16	4	
JY80-1.5LCB-24K	1.5kw	380v	φ80×215	24000	400	ER16	4	
JY80-2.2-24k	2.2kw	220v	φ80×240	24000	400	ER20	4	
JY80-2.2B-24K	2.2kw	380v	φ80×240	24000	400	ER20	4	
JY80-2.2DL-24K	2.2KW	220v	φ80×245	24000	400	ER20	4	
JY80-2.2DLB-24K	2.2KW	380v	φ80×245	24000	400	ER20	4	
JY85-2.2M-24K	2.2kw	220v	φ80×240	24000	400	ER20	4	
JY85-2.2MB-24K	2.2kw	380v	φ80×240	24000	400	ER20	4	
JY85-2.2DTM-24k	2.2kw	220v	φ80×245	24000	400	ER20	4	
JY85-2.2DTMB-24k	2.2kw	380v	φ85×253	24000	400	ER20	4	
JY100-3.2-24K	3.2kw	220v	φ85×220	24000	400	ER20	4	
JY100-3.2B-24K	3.2kw	380v	φ100×220	24000	400	ER20	4	
JY100-3.2-24K	3.2kw	220v	φ100×250	24000	400	ER20	4	
JY100-3.2B-24K	3.2kw	380v	φ100×250	24000	400	ER20	4	
JY100-3.2D-24K	3.2kw	220v	φ100×250	24000	400	ER20	4	
JY100-3.2DB-24K	3.2kw	380v	φ100×250	24000	400	ER20	4	
JY100-4.5-24K	4.5kw	220v	φ100×265	24000	400	ER20	4	

General-purpose inverter



Engravingmachinededicatedhigh -performance inverterdisplay

inverter list

power (kw)	Input voltage (v)	Output voltage (v)	Output frequency	Numberof outputitems	Specificationsize (length×width×height) (mm)	Weight
1.5kw	220v	0-220v	0-1000HZ	3	150×105×120	
1.5kw	380v	0-380v	0-1000HZ	3	150×105×120	
2.2kw	220v	0-220v	0-1000HZ	3	200×135×148	
2.2kw	380v	0-380v	0-1000HZ	3	150×105×120	
3.0kw	220v	0-220v	0-1000HZ	3	200×135×148	
4.0kw	220v	0-220v	0-1000HZ	3	200×135×148	
4.0kw	380v	0-380v	0-1000HZ	3	200×135×148	
5.5kw	220v	0-220v	0-1000HZ	3	200×135×148	
5.5kw	380v	0-380v	0-1000HZ	3	200×135×148	
7.5kw	220v	0-220v	0-1000HZ	3	280×180×170	
7.5kw	380v	0-220v	0-1000HZ	3	200×135×148	
11kw	220v	0-220v	0-1000HZ	3	280×180×170	
11kw	380v	0-380v	0-1000HZ	3	280×180×170	

The frequency converter is a general-purpose inverter oriented production based on the engraving machine industry. It has been in the leading position in the engraving machine equipment manufacturing industry. The application field includes woodworking engraving machine, stone engraving machine, jade engraving machine, constant pressure water supply, Constant pressure air supply, textile industry, etc.

In the following form, we will introduce you to several inverters commonly used by Beast.

SPINDLE SERVO MOTOR

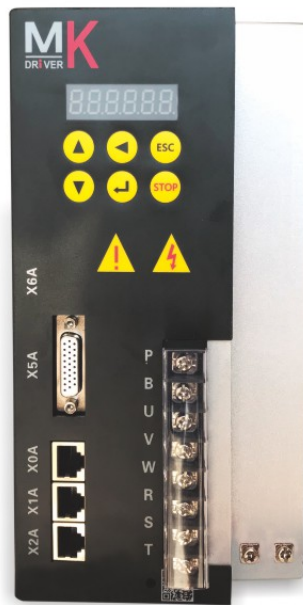
<http://www.szghauto.com>



Spindle Motor Model	Rated Power (KW)	Rated Torque (Nm)	Rated Current(A)	Max Speed (RPM)	Rated Speed (RPM)	Matched Driver
SZGH08-3-9.5-1.5/2.2-4-1500	1.5	9.5	3.7	8000	1500	SZGH-S4T1P5
SZGH08-4-14-2.2/3.7-4-1500	2.2	14	6	8000	1500	SZGH-S4T2P2
SZGH09-2-24-3.7/5.5-4-1500	3.7	24	9.5	8000	1500	SZGH-S4T3P7
SZGH10-2-35-5.5/7.5-4-1500	5.5	35	13	8000	1500	SZGH-S4T5P5
SZGH10-3-48-7.5/11-4-1500	7.5	48	17	8000	1500	SZGH-S4T7P5
SZGH10-4-71-11/15-4-1500	11	71	23.5	8000	1500	SZGH-S4T011
SZGH13-2-95-15/18.5-4-1500	15	95	31	8000	1500	SZGH-S4T015
SZGH13-3-117-18.5/22-4-1500	18	117	38	8000	1500	SZGH-S4T018
SZGH13-4-140-22/30-4-1500	22	140	45	8000	1500	SZGH-S4T022
SZGH16-1-191-30/37-4-1500	30	191	60	6000	1500	SZGH-S4T030
SZGH16-2-235-37/45-4-1500	37	235	75	6000	1500	SZGH-S4T037
SZGH16-3-286-45/55-4-1500	45	286	90	6000	1500	SZGH-S4T045
SZGH16-4-350-55/75-4-1500	55	350	110	6000	1500	SZGH-S4T055
SZGH18-1-478-75/90-4-1500	75	478	148	4500	1500	SZGH-S4T075
SZGH18-2-573-90/110-4-1500	90	573	176	4500	1500	SZGH-S4T090
SZGH18-3-700-110/132-4-1500	110	700	210	4500	1500	SZGH-S4T110
SZGH22-1-840-132/160-4-1500	132	840	255	4000	1500	SZGH-S4T132

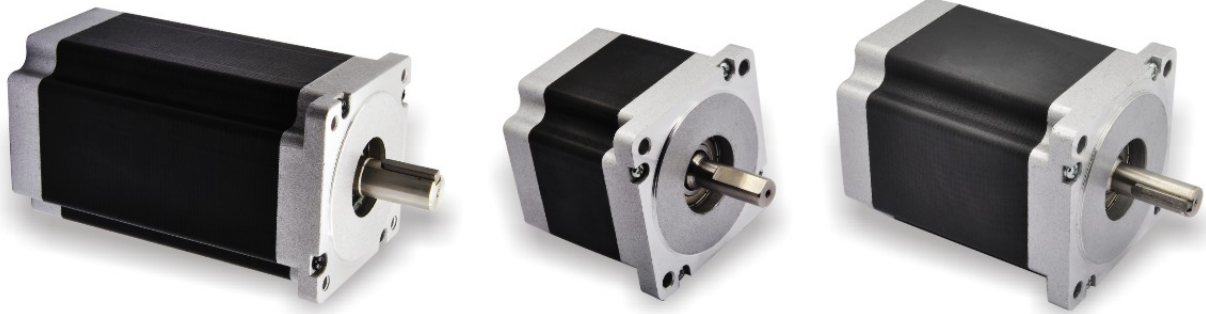
SPINDLE SERVO DRIVER

<http://www.szghauto.com>



Spindle driver Model	Matched Motor's Power(KW)	Rated Output Current(A)	Rated Output Capacity(KVA)	Min Brake Resistor(Ω)	Cable Diameter(mm ²)
SZGH-S4T1P5	1.5	3.5	2.5	0.5kw/75 Ω	2.5
SZGH-S4T2P2	2.2	5	3.8	0.5kw/75 Ω	2.5
SZGH-S4T3P7	3.7	8	5.6	1kw/40 Ω	4
SZGH-S4T5P5	5.5	13	8.6	1kw/40 Ω	6
SZGH-S4T7P5	7.5	17	11	1.5kw/32 Ω	6
SZGH-S4T011	11	25	17	1.5kw/26 Ω	6
SZGH-S4T015	15	32	20	1.5kw/26 Ω	10
SZGH-S4T018	18	39	26	2kw/40 Ω *2	10
SZGH-S4T022	22	45	30	2kw/40 Ω *2	16
SZGH-S4T030	30	60	40	2.5kw/40 Ω *3	25
SZGH-S4T037	37	75	50	2.5kw/40 Ω *3	25
SZGH-S4T045	45	90	60	2.5kw/40 Ω *4	35
SZGH-S4T055	55	110	72	2.5kw/40 Ω *4	50
SZGH-S4T075	75	150	99	2.5kw/40 Ω *6	70
SZGH-S4T090	90	178	99	2.5kw/40 Ω *8	70
SZGH-S4T110	110	210	145	2.5kw/40 Ω *9	90
SZGH-S4T132	132	255	145	2.5kw/40 Ω *10	90

Stepper Motor Series



Series	Model	Frame Size	Axle Diameter (mm)	Length (mm)	Holding Torque (N*m)	Step angle (°)	Current (A/Phase)	Matching Driver
42	42BYGH425-404	NEMA17	5	25	0.17N.m	1.8	0.4	SZGH-2M415
	42BYGH234-408	NEMA17	5	34	0.2N.m	0.9	0.8	
	42BYGH440-408	NEMA17	5	40	0.32N.m	1.8	0.8	
	42BYGH448-810	NEMA17	5	48	0.34N.m	1.8	1	
	42BYGH448-425	NEMA17	5	48	0.4N.m	1.8	2.5	
56	56BYGH441-420	NEMA23	6.35	41	0.4N.m	1.8	2	SZGH-2DM556
	56BYGH255-821	NEMA23	6.35	55	0.9N.m	0.9	2.1	
	56BYGH454-828	NEMA23	6.35	54	0.9N.m	1.8	2.8	
	56BYGH476-828	NEMA23	6.35	76	1.3N.m	1.8	2.8	
	56BYGH476-447	NEMA23	8	76	2.0N.m	1.8	4.7	
	56BYGH480-450	NEMA23	8	80	2.2N.m	1.8	5	
	56BYGH480-830	NEMA23	8	80	2.2N.m	1.8	3	
86	86BYGH465-828	NEMA34	9.5	65	3.5N.m	1.8	2.8	SZGH-2DM860H
	86BYGH480-842	NEMA34	12.7	80	4.5N.m	1.8	4.2	
	86BYGH4101-450	NEMA34	12.7	101	6.0N.m	1.8	5	
	86BYGH4118-842	NEMA34	12.7	118	8.5N.m	1.8	4.2	SZGH-2M2280
	86BYGH4156-845	NEMA34	15.875	156	12N.m	1.8	4.5	
110	110BYGH4115-460	NEMA42	19	115	12N.m	1.8	6.0	SZGH-2M2208
	110BYGH4150-460	NEMA42	19	150	20N.m	1.8	6.0	
	110BYGH4165-460	NEMA42	19	165	24N.m	1.8	6.0	
130	130BYGH3188-368	NEMA43	19	188	24N.m	1.2	6.8	SZGH-3DM2080
	130BYGH3220-368	NEMA43	19	220	28N.m	1.2	6.8	
	130BYGH3252-368	NEMA43	19	252	35N.m	1.2	6.8	
	130BYGH3280-368	NEMA43	19	280	50N.m	1.2	6.8	

STEPPER DRIVER SERIES

<http://www.szghauto.com>



- GuanHong provide 2 and 3 phase stepper motor and stepper driver for Nema 17, 23, 34, 42 and 43 series, with the DSP-based and adopt latest stepper control technology with many advanced features. The high performance digital stepper drives are featured with extra low noise, very low motor heating, and ultra smooth motor movements at low speed.

Product advantage:

- Speed stability
- Strong power
- Control convenient



Series	Model	Control Type	Power			Cnfiguration	Matching Motors(NEMA)
			Voltage(v)		Current(A)		NEMA
			AC	DC			
2phase stepper driver	SZGH-2M415	Step&Dir	—	24-36	0.21-1.5	DIP Switch	17
	SZGH-2M420	Step&Dir	—	24-36	0.3-2.5	DIP Switch	23
	SZGH-2DM542	Step&Dir		24-48	1.0-4.2	DIP Switch	23,24
	SZGH-2DM556	Step&Dir		24-48	1.4-5.6	DIP Switch	23,24
	SZGH-2DM860H	Step&Dir	30-80	40-110	1.5-6.0	DIP Switch	23,24
	SZGH-2DM2280	Step&Dir	80-240	—	1.6-5.9	DIP Switch	42,43
	SZGH-3DM2080	Step&Dir	80-240	—	1.6-5.9	DIP Switch	42,43

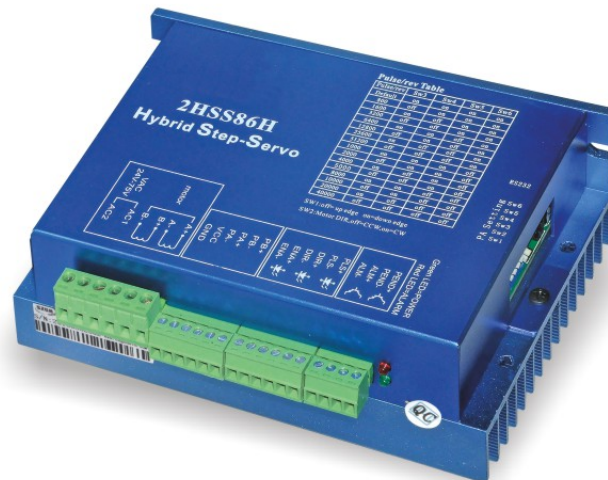
Close Loop Stepper Motor Series



Modle	Frame Size	Axle Diameter (mm)	Encoder (Line)	Holding Torque (N*m)	Length (mm)	Current (A/Phase)	Weight (Kg)	Matching Driver
56BYGH454EC-1000	NEMA23	8	1000	0.9N.m	81	4.0	0.6	2HSS57
56BYGH480EC-1000	NEMA23	8	1000	2.2N.m	105	5.0	1.1	
86BYGH480EC-1000	NEMA34	14	1000	4.5N.m	111	5.0	2.6	2HSS86
86BYGH4118EC-1000	NEMA34	14	1000	8.5N.m	149	6.0	4.3	
86BYGH4156EC-1000	NEMA34	16	1000	12N.m	187	6.0	4.6	2HSS1108
86BYGH3156EC-1000	NEMA34	16	1000	12Nm	187	6.0	4.8	3HSS2208H (220V)
110BYGH4135EC-1000	NEMA42	19	1000	12Nm	166	6.0	6.4	2HSS2208 (220V)
110BYGH4160EC-1000	NEMA42	19	1000	18Nm	191	6.5	8.1	
110BYGH4190EC-1000	NEMA42	19	1000	20Nm	221	6.8	9.2	
130BYGH4205EC-1000	NEMA43	24	1000	28Nm	256	7.5	15.1	
130BYGH4225EC-1000	NEMA43	24	1000	35Nm	276	8.0	17.2	

Closed Loop Stepper Driver

- Adopt 32 bit motor control special DSP core
- To use advanced vector closed loop control technology
- Able to work with 86 series and 110 series closed loop stepper motor / easy servo motor
- Optical-coupled differential signal input
- Pulse frequency 200KHZ
- Micro-stepping setting (200-51200)
- Protection function for over-current, over-presure and error
- Six bit digitron display , convenient to setting parameter and keep check on motor working condition
- Closed loop stepper driver is a new type of easy servo motor driver by SZGH develop,adopt new and special motor control DSP core and apply vector type closed loop control technolgy ,it already sucessfully slove the problme for common stepper motor missing step , also improve high speed of motor ,reduce motor body heat and vibration , so that promote machine progressing speed and precision .
- the driver paramater setting is with two method : one is serial port communication by PC and RS232, adop specialized adjust software to finish parameter setting second , directly use the driver security panel to setting parameter, the driver itself is with best default value match with motor. so only need adjust the dirver micro-stepping will be ok.



Model	Phase	Power			Configuration	Matching Motors(NEMA)
		Voltage(V)		Current (A)		
		AC	DC	Peak		NEMA
2HSS57	2phase	—	24-48	6.0	RS232	23
2HSS86H	2phase	30-75	24-110	8.0	RS232	34
2HSS1108	2phase	80-220	—	10	LED	42
2HSS2208	2phase	110-240	—	12	LED	43
3HSS2208H	3phase	110-240	—	12	LED	43

GH-1000TC

- 1) 2-5 Axis Fully English Type CNC lathe controller
- 2) 800x600 8.4 inch real color LCD displayer
- 3) Electric Turret & Binary code turret,Max: 99 pcs tools
- 4) Support ATC , Macro function and PLC function
- 5) Max speed is 60m/min, feeding speed is 24m/min
- 6) Adapted servo spindle can realize spindle continuous position,rigid tapping,rigid screw processing
- 7) High anti-jamming switch power(100V-240VAC 50Hz/60Hz -> 24VDC)
- 8) 64MB Memory , 56Mb user store room
- 9) With USB interface,it supports file operation in flash disk,system configuration and software upgrade
- 10)Position Control Mode:Pulse+Direction/AB Phase,Dual Analog voltage output of 0~10V
- 11)32 bits ARM microprocessor+FPGA Technology.
- 12)Basic I/O: 36X36 , can be edited freely
- 13)cutter offset : C
- 14)Installing dimension, electric interfaces, instruction system and operating windows being compatible with those of GSK980TDb Turning CNC System "



GH-1000TC

Application: CNC Lathe & Turning Machinery and specially automatic equipment

CNC Milling & Drilling Controller

GH-1000MC

- 1) 3-5 Axis Fully English Type CNC Milling controller
- 2) 800x600 8.4 inch real color LCD displayer
- 3) Electric Turret & Binary code turret,Max: 99 pcs tools
- 4) Support ATC , Macro function and PLC function
- 5) Max speed is 60m/min, feeding speed is 24m/min,0.1um control precision
- 6) Adapted servo spindle can realize spindle continuous position,rigid tapping,rigid screw processing
- 7) High anti-jamming switch power(100V-240VAC 50Hz/60Hz -> 24VDC)
- 8) 64MB Memory,56Mb user store room
- 9) With USB interface,it supports file operation in flash disk,system configuration and software upgrade
- 10)Position Control Mode:Pulse+Direction/AB Phase,Dual Analog voltage output of 0~10V
- 11)32 bits ARM microprocessor+FPGA Technology.
- 12)Basic I/O:36X36,can be edited freely
- 13)cutter offset:C



GH-1000MC

Application: CNC Lathe & Milling Machinery and specially automatic equipment

GH-Z4

- 1. 15" LCD, plasma and flame cutting, simple display.
- 2. Stronger industrial embedded core, the process speed is four times as fast as Z4, advanced arc interpolation and lift speed calculation.
- 3. Simpler control: multi-function knob, shortcut keys, 4-torch control key and so on.
- 4. Support various compound cutting, plasma, flame, laser, line-draw, drill, can steady work in the electromagnetism environment.
- 5. Remote Control: RFL1, RFS1
- 6. Arc Voltage Torch Height Controller: AHa-S1
- 7. Torch Lifter: AHb-S1
- 8. Programming: ISO-G code, graph library and manual programming
- 9. I/O Control: input32, output24
- 10. AD/DA: 2 for each, 10 digits 0-10V (0-5V is compatible)



GH-Z4



THC

CNC Cutting Numerical Controller

GH-2012AH

- 1. Industrial ARM chip, low power consumption, low heat. Anti-interference from plasma, pass EMC test.
- 2. It has 4 relays for normally-open/closed contacts, 24 figures are available to use
- 3. Kerf compensation, breaking point recover, parts rotation, mirror, scale and so on.
- 4. It's compatible with Fast CAM and other nesting software
- 5. I/O Control: input (optoelectronic isolation)*13, output (relay output)*8
- 6. Highest Speed: 24m/min, Programming Unit: 0.001mm
- 7. Programming: ISO-G code and manual programming
- 8. Display: 7" color LCD
- 9. Working Temperature: 0°C ~ 55°C



GH-2012AH